

## **STAINLESS STEEL PUMPS**

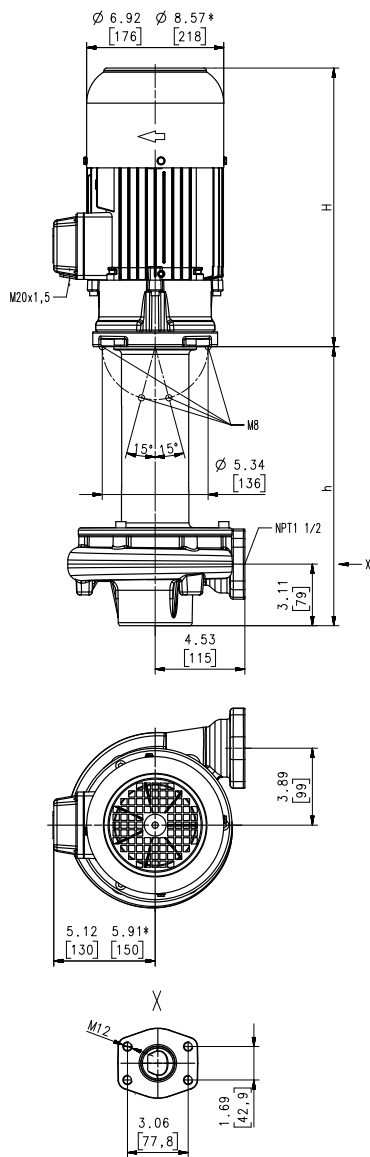
# Stainless Steel Immersion Pumps

## TVA400...600

Semi-open impellers

60 Hz

### TVA400...600



Dimensions in Inches / mm  
\*) Dimensions for TVA600

Type	Flow at head	Height	Depth of im- mersion		Weight		Power HP kW	Voltage 3~ V	Fre- quen- cy Hz	Current AMPS	Speed RPM
	GPM /Feet l/min /m	H inch mm	h inch	h mm	Lbs	kg					
<b>TVA400S360</b>	100/68	14.1	14.09	358	112.5	51	3.9	230	60	10.2	3480
	400/19	358					2.94	460	60	5.1	3480
	<b>580</b>			22.76	578	125.7	57				
	<b>880</b>			34.57	878	154.4	70				
<b>1100</b>			43.23	1098	168	76					
<b>TVA600S360</b>	100/86	15.6	14.09	358	136.7	62	5.1	230	60	12.8	3520
	400/25	396					3.8	460	60	6.4	3520
	<b>580</b>			22.76	578	149.9	68				
	<b>880</b>			34.57	878	176	80				
<b>1100</b>			43.23	1098	190	86					



**Stainless Steel Immersion Pumps**

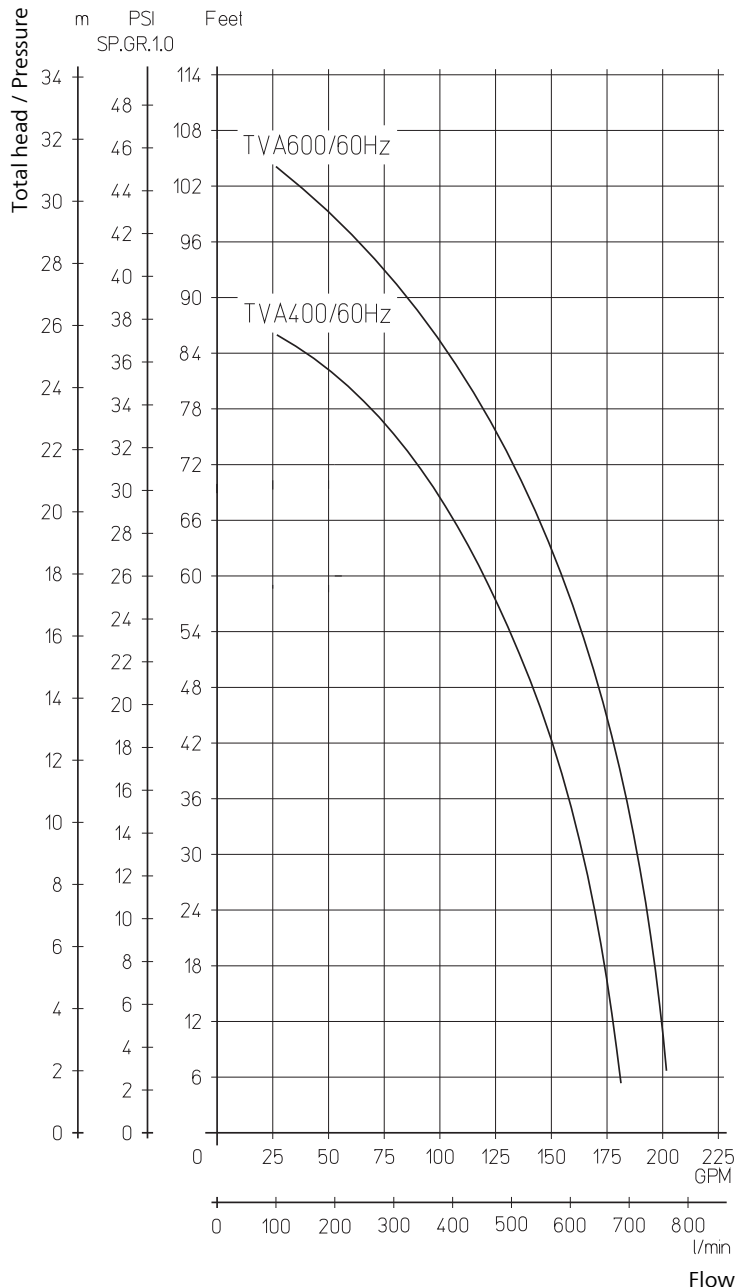
are centrifugal pumps of compact design with a **semi-open impeller** mounted directly onto the extended motor shaft. The TVA pump series will achieve **high hydraulic efficiencies** while being well suited for handling small metal chips and fines. This makes the TVA series the superior choice for industrial washing applications of metal parts. Complete pump and plate assemblies, including discharge pipe and mounting plate are available upon request.

**Applications**

Types of fluid  
 Industry water  
 coolants  
 cooling/cutting oils  
 lees / solvents  
 de-ionized water  
 Kinematic viscosity  
 ...90 SSU (...20 mm<sup>2</sup>/s)  
 Pumping temperature  
 30...194 °F (0...90 °C)  
 Max. chip to coolant ratio by weight:  
 0.03 %

**Construction**

Pump body	CrNi-steel
Cover	CrNi-steel
Impeller	CrNi-steel
Shaft	CrNi-steel
Optional:	
Suction cover	with threaded inlet
Noise level	
TVA400	69 dBA
TVA600	74 dBA



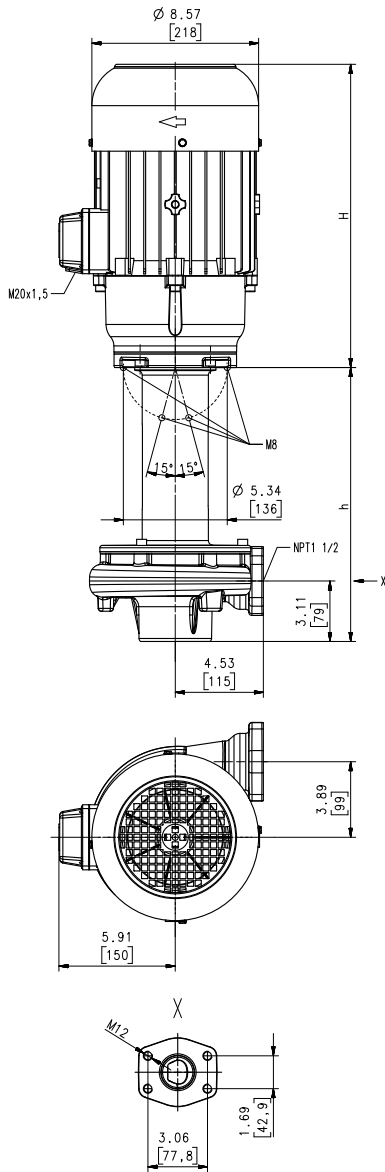
# Stainless Steel Immersion Pumps

## TVA900

60 Hz

### Semi-open impellers

#### TVA900



Dimensions in Inches / mm

Type	Flow at head	Height	Depth of im- mersion		Weight		Power	Voltage	Fre- quen- cy	Current	Speed
	GPM /Feet l/min /m	H inch mm	h inch	h mm	Lbs	kg	HP kW	V	Hz	AMPS	RPM
<b>TVA900S360</b>	125/112	16.8	14.09	358	152.1	69	7.7	230	60	19.0	3520
	500/32	426					5.75	460	60	9.5	3520
<b>580</b>			22.76	578	165	75					
<b>880</b>			34.57	878	194	88					
<b>1100</b>			43.23	1098	207	94					



**Stainless Steel Immersion Pumps**

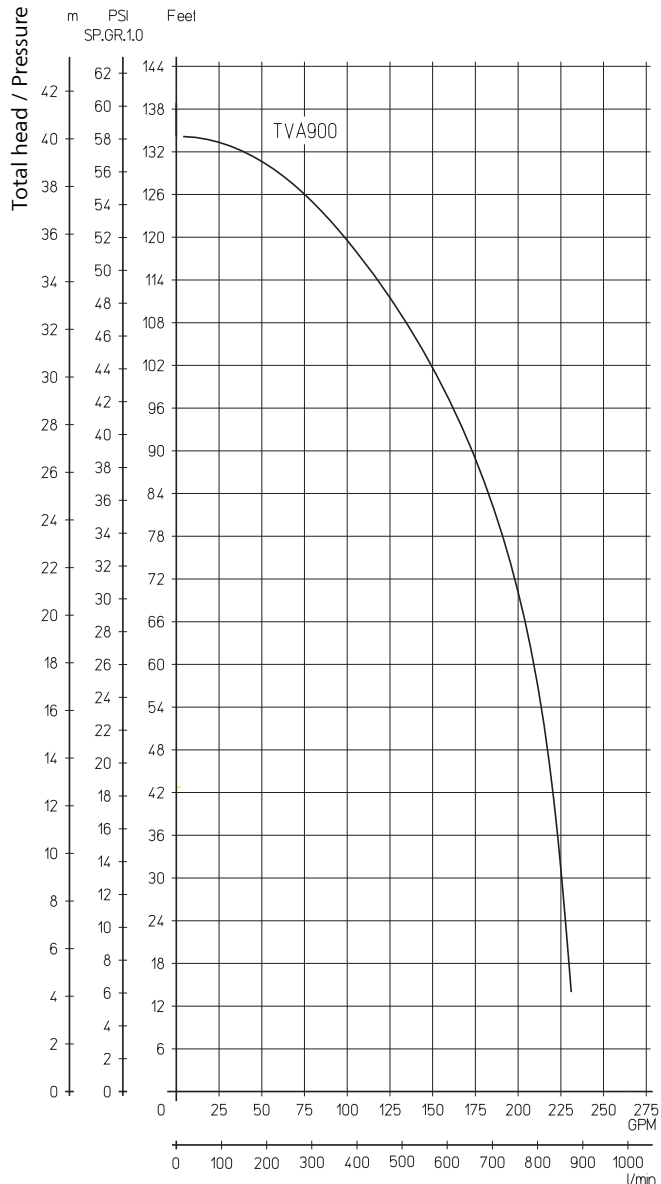
are centrifugal pumps of compact design with a **semi-open impeller** mounted directly onto the extended motor shaft. The TVA pump series will achieve **high hydraulic efficiencies** while being well suited for handling small metal chips and fines. This makes the TVA series the superior choice for industrial washing applications of metal parts. Complete pump and plate assemblies, including discharge pipe and mounting plate are available upon request..

**Applications**

Types of fluid  
 Industry water  
 coolants  
 cooling/cutting oils  
 lees / solvents  
 de-ionized water  
 Kinematic viscosity  
 ...90 SSU (...20 mm<sup>2</sup>/s)  
 Pumping temperature  
 30...194 °F (0...90 °C)  
 Max. chip to coolant ratio by weight:  
 0.03 %

**Construction**

Pump body	CrNi-steel
Cover	CrNi-steel
Impeller	CrNi-steel
Shaft	CrNi-steel
Optional:	
Suction cover	with threaded inlet
Noise level	
TVA900	74 dBA



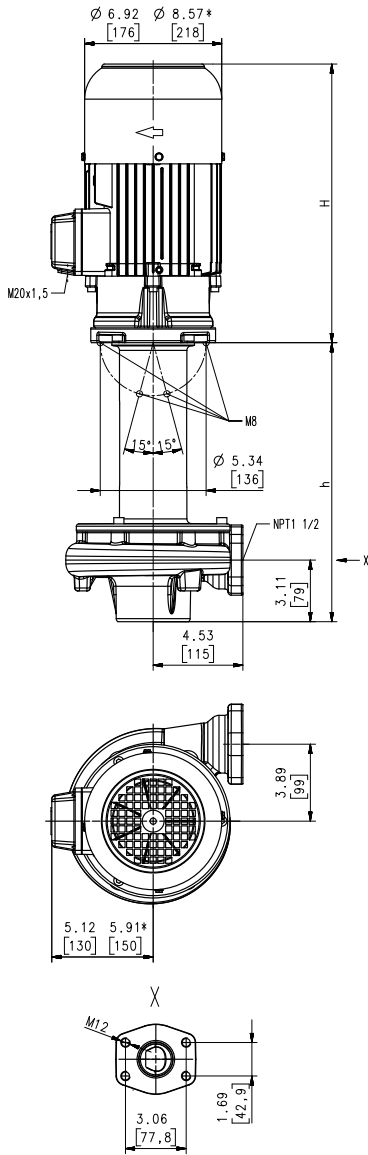
# Stainless Steel Immersion Pumps

## TVG400...600



### Closed impellers

#### TVG400...600



Dimensions in Inches / mm  
\*) Dimensions for TVG600

Type	Flow at head	Height	Depth of im- mersion		Weight		Power	Voltage	Fre- quen- cy	Current	Speed
	GPM /Feet l/min /m	H inch mm	h inch	h mm	Lbs	kg	HP kW	V	Hz	AMPS	RPM
<b>TVG400S360</b>	100/73	14.1	14.09	358	112.5	51	3.9	230	60	10.2	3480
	400/21	358					2.94	460	60	5.1	3480
	<b>580</b>		22.76	578	125.7	57					
	<b>880</b>		34.57	878	154.4	70					
<b>1100</b>		43.23	1098	168	76						
<b>TVG600S360</b>	100/94	15.6	14.09	358	136.7	62	5.1	230	60	12.8	3520
	400/27	396					3.8	460	60	6.4	3520
	<b>580</b>		22.76	578	149.9	68					
	<b>880</b>		34.57	878	176	80					
<b>1100</b>		43.23	1098	190	86						



**Stainless Steel Immersion Pumps**

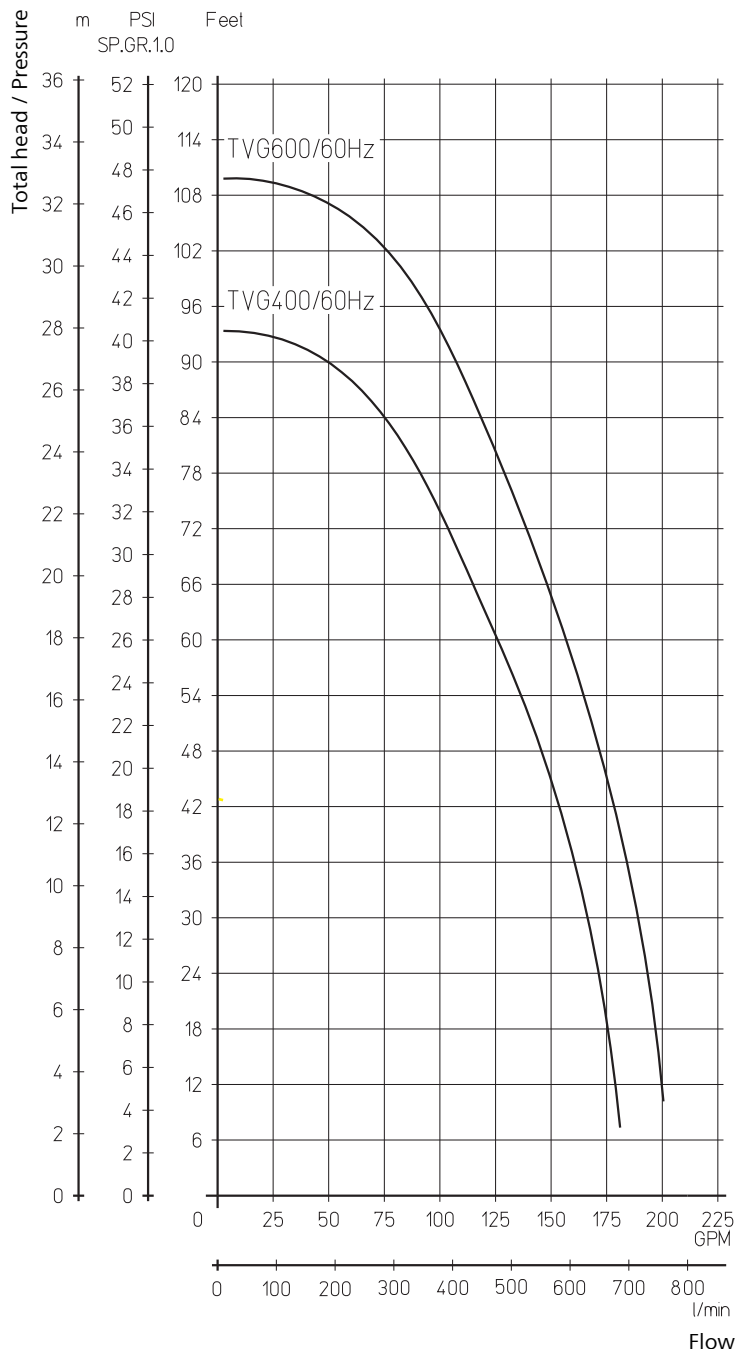
are centrifugal pumps of compact design with the impeller mounted directly onto the extended motor shaft. The **TVG pump** series maximizes hydraulic efficiencies with its **closed impeller** design. These pump series are both particularly well suited for industrial washing applications of metal parts. Complete pump and plate assemblies, including discharge pipe and mounting plate are available upon request.

**Applications**

**Types of fluid**  
 Industry water  
 coolants  
 cooling/cutting oils  
 lees / solvents  
 de-ionized water  
**Kinematic viscosity**  
 ...90 SSU (...20 mm<sup>2</sup>/s)  
**Pumping temperature**  
 30...194 °F (0...90 °C)

**Construction**

Pump body	CrNi-steel
Cover	CrNi-steel
Impeller	CrNi-steel
Shaft	CrNi-steel
Optional:	
Suction cover	with threaded inlet
<b>Noise level</b>	
TVG400	69 dBA
TVG600	74 dBA



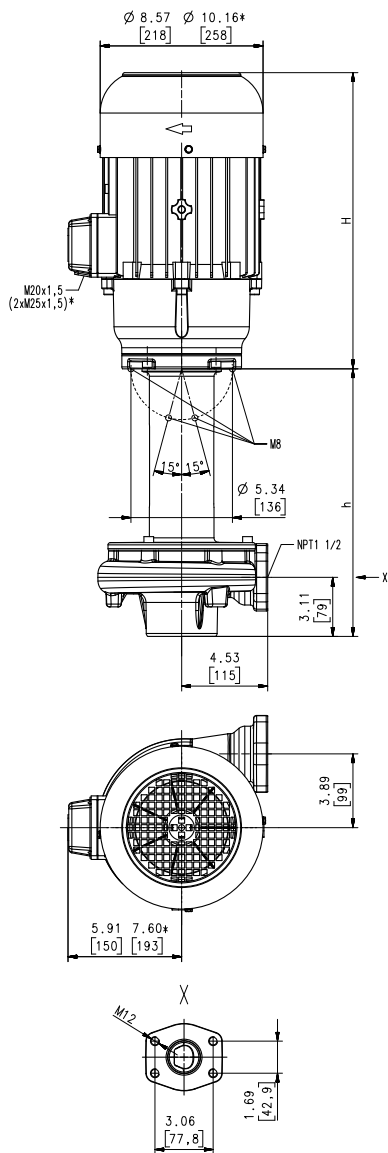
# Stainless Steel Immersion Pumps

## TVG900...1000

Closed impellers

60 Hz

### TVG900...1000



Dimensions in Inches / mm  
\*) Dimensions for TVG1000

Type	Flow at head	Height	Depth of im- mersion		Weight		Power	Voltage	Fre- quen- cy	Current	Speed
	GPM /Feet l/min /m	H inch mm	h inch	h mm	Lbs	kg	HP kW	V	Hz	AMPS	RPM
<b>TVG900S360</b>	125/118	16.8	14.09	358	152.1	69	7.7	230	60	19.0	3520
	500/35	426					5.75	460	60	9.5	3520
	<b>580</b>		22.76	578	165	75					
	<b>880</b>		30.63	778	194	88					
<b>1100</b>		43.23	1098	207	94						
<b>TVG1000S360</b>	150/138	18.4	14.09	358	201	91	10	230	60	23.0	3545
	600/40	468					7.48	460	60	11.5	3545
	<b>580</b>		22.76	578	214	97					
	<b>880</b>		34.57	878	240	109					
<b>1100</b>		43.23	1098	254	115						





### Stainless Steel Immersion Pumps

are centrifugal pumps of compact design with the impeller mounted directly onto the extended motor shaft. The **TVG pump** series maximizes hydraulic efficiencies with its **closed impeller** design. These pump series are both particularly well suited for industrial washing applications of metal parts. Complete pump and plate assemblies, including discharge pipe and mounting plate are available upon request.

### Applications

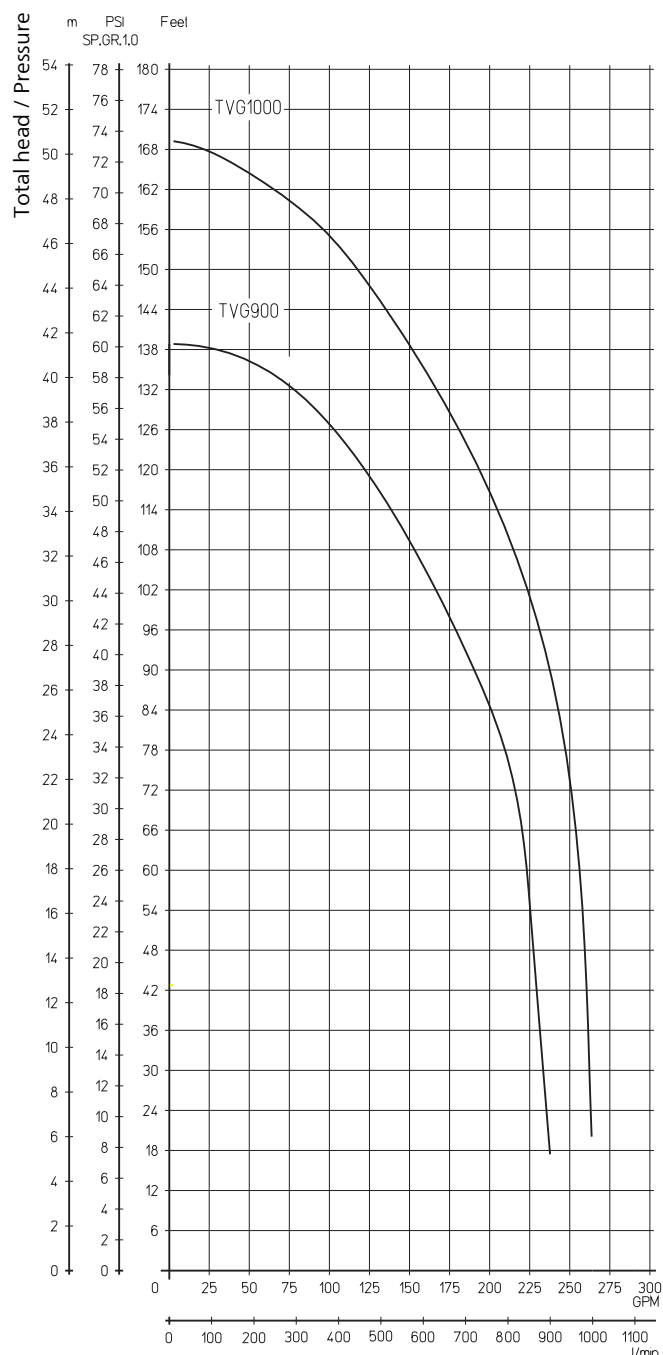
**Types of fluid**  
 Industry water  
 coolants  
 cooling/cutting oils  
 lees / solvents  
 de-ionized water

**Kinematic viscosity**  
 ...90 SSU (...20 mm<sup>2</sup>/s)

**Pumping temperature**  
 30...194 °F (0...90 °C)

### Construction

Pump body	CrNi-steel
Cover	CrNi-steel
Impeller	CrNi-steel
Shaft	CrNi-steel
Optional:	
Suction cover	with threaded inlet
Noise level	
TVG900	74 dBA
TVG1000	77 dBA

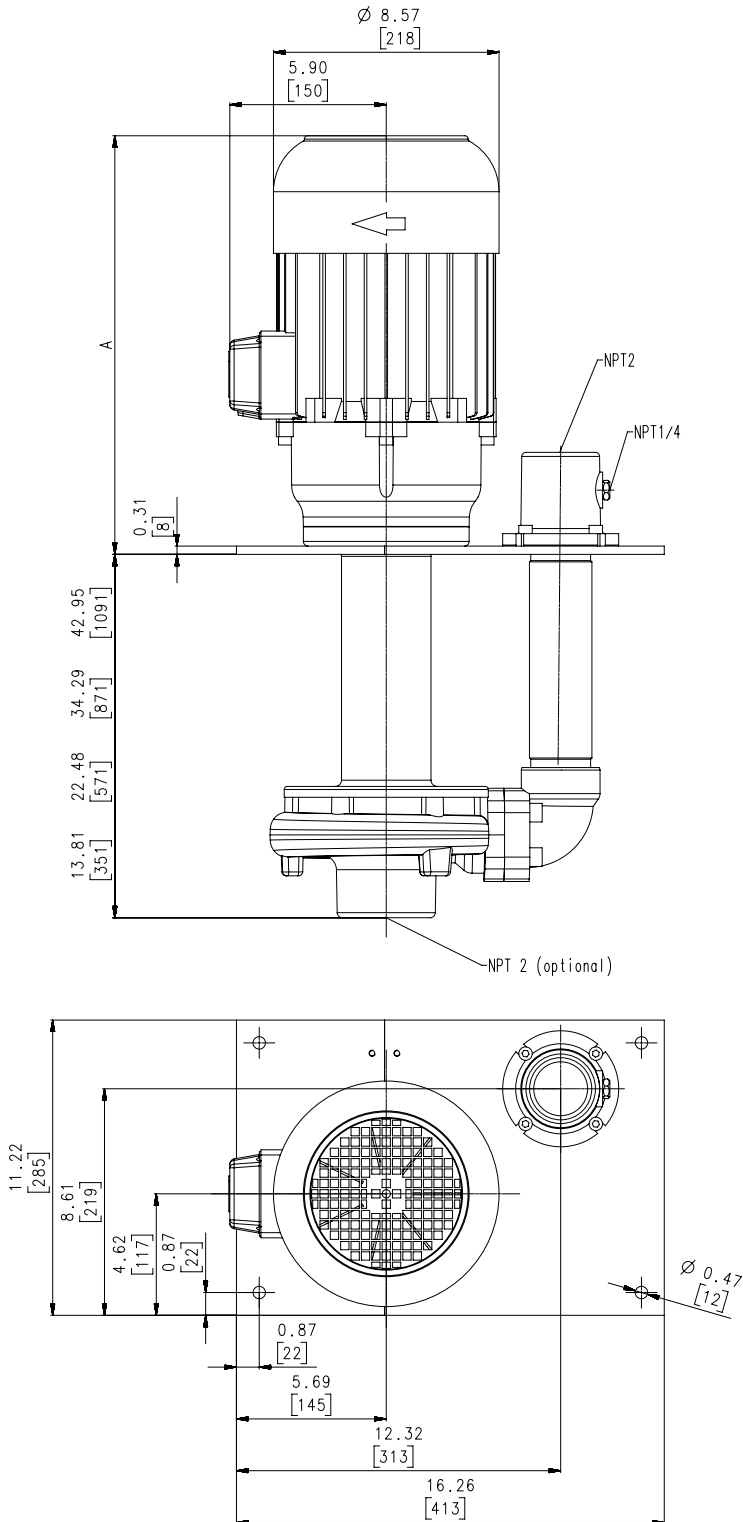


# Stainless Steel Immersion Pumps

## Fully assembled drop-in package (optional)

Series TVG and TVA:

Stainless steel pump drop-in package with fully assembled mounting plate and piping.



# Stainless Steel Immersion Pumps

## Relatively high pressure pumps STH-N

Series STH-N use closed impellers in order to minimize power consumption and to optimize hydraulic pump efficiencies. In addition, the STH-N series offers relatively high pressures at short immersion depths.

A **frequency converter** can be supplied for **special applications** or for matching the pump characteristic to a specific duty point.

More information can be found in the **Main Catalog "Coolant Pumps": STH2 to STH17**



STH-N

### Construction

Pump body	CrNi-steel
Cover	CrNi-steel
Impellers	CrNi-steel
Shaft	CrNi-steel
Diffusers	CrNi-steel
Mechanical seal	SiC
O-rings	Viton

### Pump Curves

One key feature of the STH-N series pumps is their non-overloading motors. These pumps can be operated across the entire pump curve without damaging the motor. This key advantage applies for all allowed fluids, including coolant oils. For specific applications where only one working point is required, the pump/motor combinations can be reviewed and a smaller motor size might be applicable.

### Number of Stages

STH-N pump curves are determined by the number of impeller used within the pump.

Within the range the immersion depth can be extend up to the maximum mentioned length.

Example: STH203S690 (3 impeller, 27.17 inch / 690 mm immersion depth)

# *The Brinkmann Pumps network – This is the way to find us.*



BRINKMANN PUMPS has a global presence and direct representation throughout North America, Europe, and Asia. This ensures quick response times, competent consulting personnel and the highest level of service, which Brinkmann Pumps is known for, anytime and anywhere. Visit our website – where you will find all the contact details for our representative offices. Visit us and convince yourself of our capabilities.

Welcome to BRINKMANN PUMPS.



**Brinkmann Pumps Inc.**  
47060 Cartier Drive  
Wixom, MI 48393  
United States

**BRINKMANN PUMPS**  
K.H. Brinkmann GmbH & Co. KG  
Friedrichstraße 2  
58791 Werdohl  
Germany

**Brinkmann Pumps Japan Co. Ltd.**  
2-19-12, Engyo Fujisawa  
Kanagawa, 252-0805  
Japan

Phone +1 248 926 9400  
Fax +1 248 926 9405  
sales@brinkmannpumps.com  
www.brinkmannpumps.com

Phone +49 2392 5006-0  
Fax +49 2392 5006-180  
sales@brinkmannpumps.de  
www.brinkmannpumps.de

Phone +81 466 778320  
Fax +81 466 778321  
sales@brinkmannpumps.jp  
www.brinkmannpumps.jp