

**bpdrivetec**  
**DRIVE TECHNOLOGY**

# bpdrivetec

## DRIVE TECHNOLOGY FOR VARIOUS UNITS

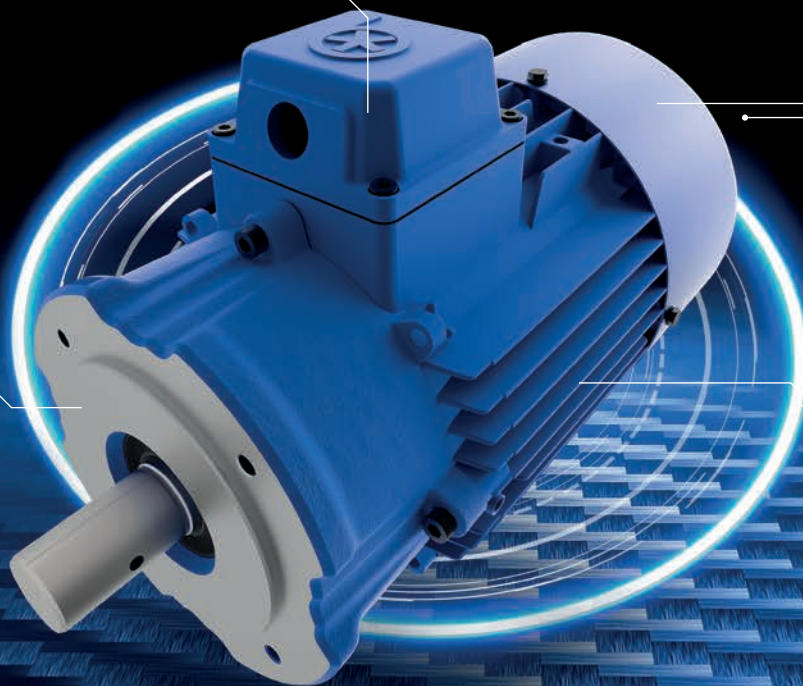
NEW ELECTRIC CONNECTION TECHNOLOGY

SILENT MOTOR FAN

CUSTOMIZED FLANGE AND  
SHAFT DESIGN

WATER-COOLED  
PUMP MOTOR

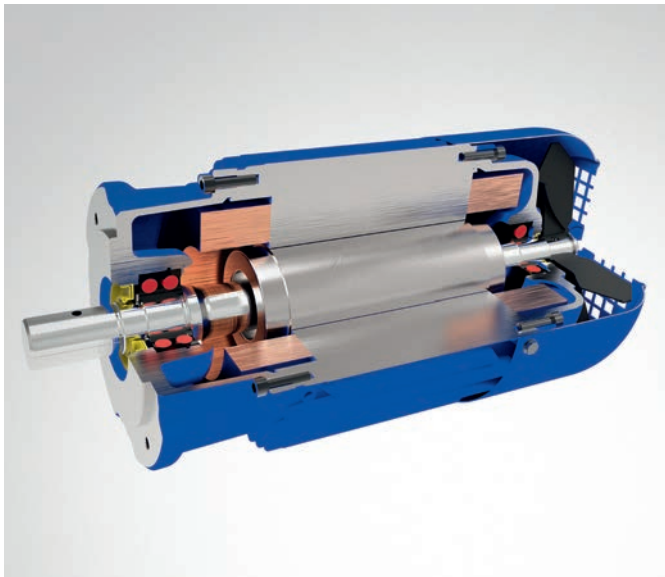
MULTI COUNTRY MOTOR



# Brinkmann Multi Country Motor

## One motor for the most common country regulations

The Brinkmann Multi Country Motor combines the most common voltages, frequencies and energy labels.



### Country regulations



IE-Code



CC311B

NEMA-Premium



CEL



Kemco

other country regulations on request

### Motor design

- State of the art induction motor
- IE3 energy class
- Several energy labels
- Reinforced motor bearings

### Flexibility

- Faster delivery times
- Lower storage costs
- Facilitates serial production

### Technical data

#### Current

- 50 Hz:  
200 V/380–415 V
- 60 Hz:  
200–230 V/380–480 V

### Technical data

#### Power kW

50 Hz / 60 Hz
B 1.1 / 1.27
B 1.3 / 1.49
B 1.5 / 1.75
B 1.7 / 1.95
B 1.9 / 2.18
B 2.2 / 2.55
B 2.6 / 2.94
B 3.0 / 3.45
B 3.3 / 3.8
B 4.0 / 4.55
B 5.0 / 5.75
B 5.5 / 6.3

# Water-cooled Pump Motor

## The Low-emission Drive

Coolant pumps in combination with water-cooled motors address current issues of environmental protection. This opens opportunities for new applications such as using waste heat and noise reduction at the work place.

Water-cooled motors for coolant pumps from BRINKMANN PUMPS are available in two types of design:

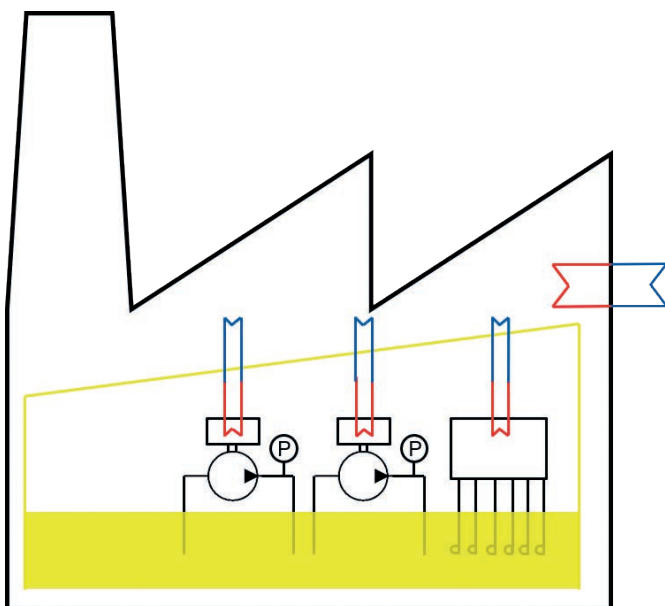
- Design IMB5, motor rating 1.1 kW to 30 kW
- Special design with reinforced bearings, motor rating 1.1 kW to 11 kW

Various voltages and frequency combinations are available, as well as a variable frequency drive directly mounted to the motor.

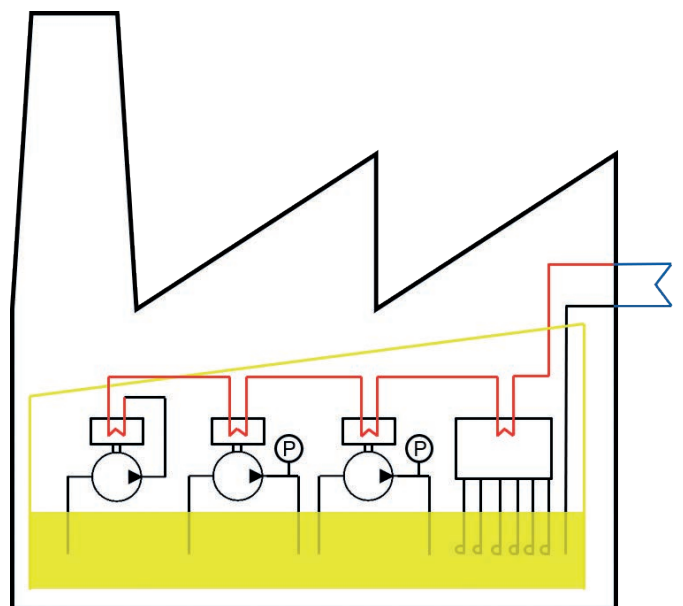


## CO<sub>2</sub> Footprint

- The water-cooled motor replaces the forced convection by the fan
- Thermal power loss of the motor is transferred to the cooling fluid instead of being dissipated to the environment
- Directed transfer of the motor heat into the cooling fluid
- Waste heat can be deployed outside of the production hall
- Positive impact on CO<sub>2</sub> footprint, e. g. if the temperature of the production halls has to be maintained



Widespread building concepts with heat convection to the production hall



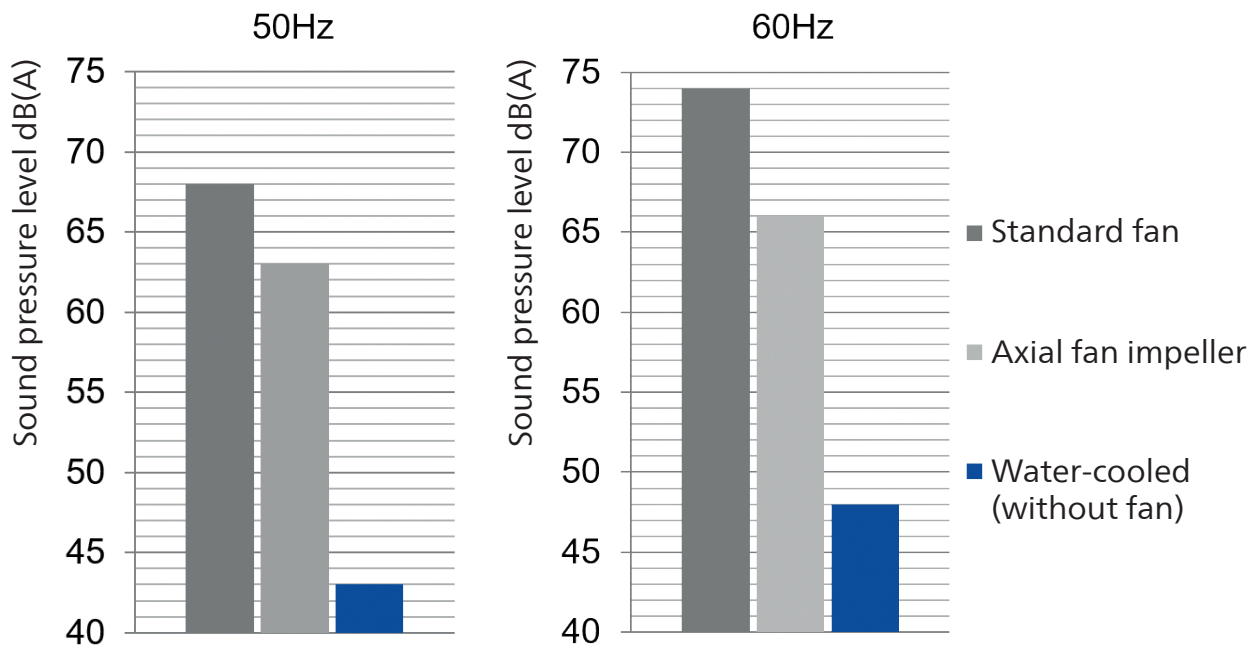
Building concept with water-cooled motors and targeted heat dissipation



# Water-cooled Pump Motor

## The Low-emission Drive

Sound emission



- Water-cooled motors offer in comparison the lowest noise emission
- Required sound enclosures of the noise source can possibly be omitted
- Retrofitting of additional pumps does not automatically increase the noise level



Conventional coolant pumps equipped with air-cooled motors on a filter system

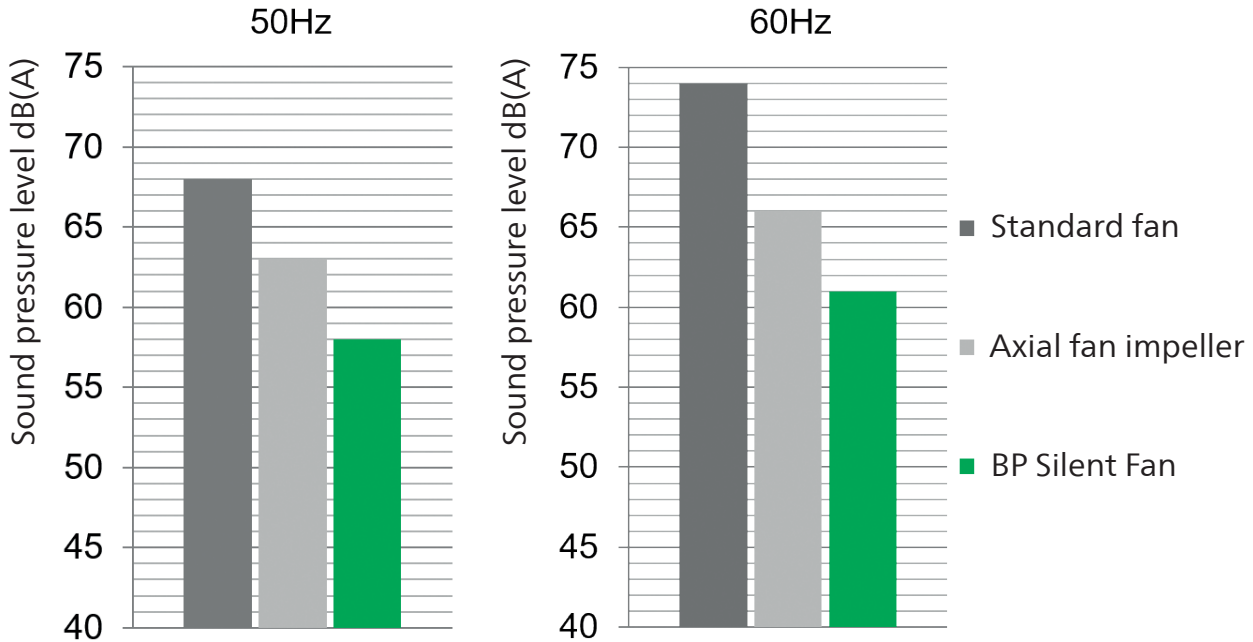


Noise reduction of the system by 8 dB(A) through water-cooled motors, despite the addition of three new pumps at the same time

## R&D project "Silent Fan"

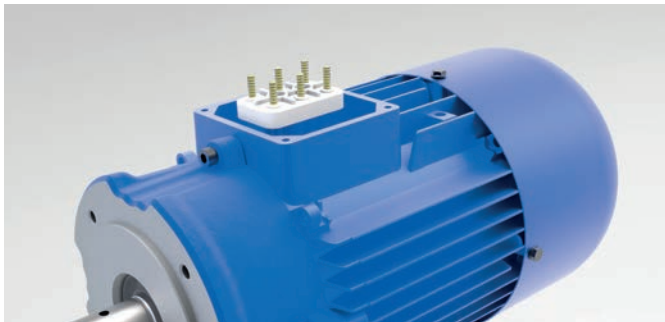
The objective of the project is to develop a very quiet fan, in order to comply with strict noise emission specifications.

Sound emission



## R&D project "Connection technology"

The objective of the project is to achieve time savings when connecting the motor to the power supply.



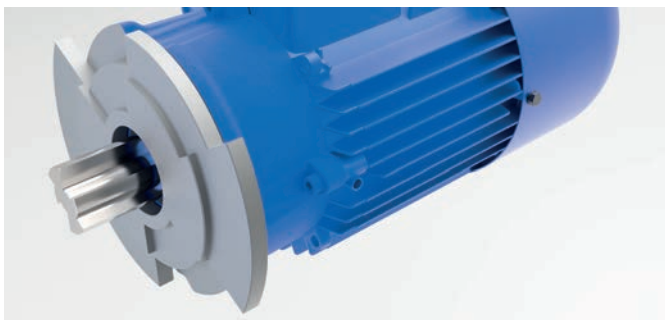
Previous design



New terminal board with cage clamps

## R&D project "Versatile flange and shaft designs"

The objective of the project is to open the BRINKMANN motor range for a large portfolio of applications.



Various flange and shaft designs



# CONTROL, OPTIMIZE, DIGITALIZE.

Industry 4.0 in perfection: Utilizing bpllogic pump control allows to intelligently integrate BRINKMANN PUMPS' know-how between machine tools, pumps, filtration systems and other components.

bpllogic adapts perfectly to the existing system environment – no matter which variable frequency drives are used.



brainpower your pumps!

## bpllogic

DEVICE FEATURES

CONNECTIVITY

BASIC APPLICATIONS



MONITORING

PREDICTIVE MAINTENANCE

SOFT SENSORS

ADVANCED APPLICATIONS



Additional information can be found under:  
[bpllogic.brinkmannpumps.de](http://bpllogic.brinkmannpumps.de)

# *The Brinkmann Pumps network – This is the way to find us.*



BRINKMANN PUMPS has a global presence and direct representation throughout Europe, Asia and North America. This ensures quick response times, competent consulting personnel and the highest level of service, which Brinkmann Pumps is known for, anytime and anywhere. Visit our website – where you will find all the contact details for our representative offices. Visit us and convince yourself of our capabilities.

Welcome to BRINKMANN PUMPS.



## **BRINKMANN PUMPS**

**K.H. Brinkmann GmbH & Co. KG**  
Friedrichstraße 2  
58791 Werdohl  
Germany

**Brinkmann Pumps Inc.**  
47060 Cartier Drive  
Wixom, MI 48393  
United States

**Brinkmann Pumps Japan Co. Ltd.**  
2-19-12, Engyo Fujisawa  
Kanagawa, 252-0805  
Japan

T +49 2392 5006-0  
F +49 2392 5006-180  
sales@brinkmannpumps.de  
www.brinkmannpumps.de

T +1 248 926 9400  
F +1 248 926 9405  
sales@brinkmannpumps.com  
www.brinkmannpumps.com

T +81 466 778320  
F +81 466 778321  
sales@brinkmannpumps.jp  
www.brinkmannpumps.jp